

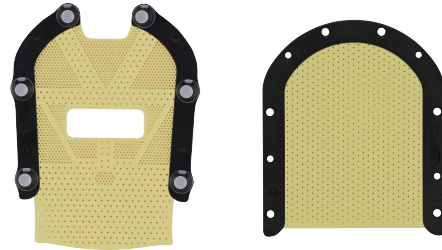
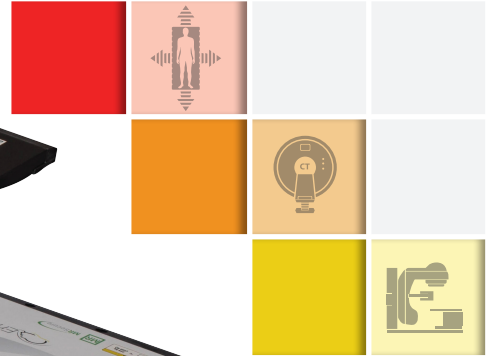


Encompass™

SRS Immobilization System



HEAD & NECK



Submillimetric Immobilization



positioning
patients for life.®

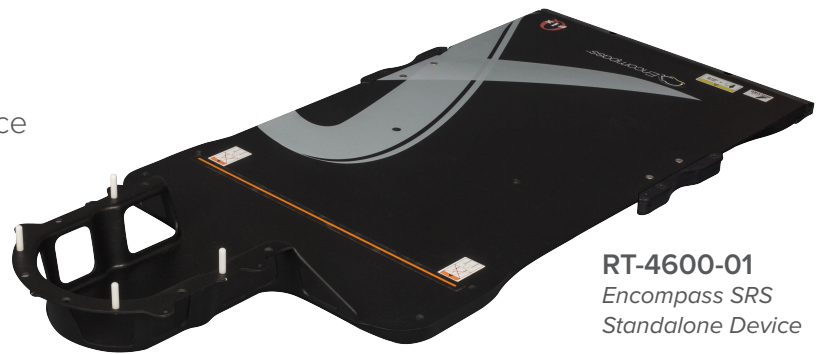
www.Qfix.com

Encompass SRS Immobilization System

Highly rigid, non-invasive immobilization device designed for precisely targeted treatment to the brain, head & neck.

Clinical Advantages:

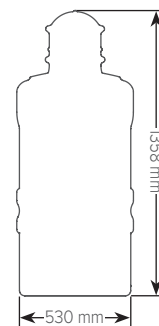
- Immobilization for treatment of multiple lesions with a single isocenter
- High precision immobilization with submillimetric accuracy for stereotactic radiosurgery, including trigeminal neuralgia
- Integrated Shim™ System optimizes workflow efficiencies
- Open View™ Thermoplastic can reduce patient anxiety and allows for intra-fraction positioning verification utilizing optical tracking systems
- Submillimetric immobilization with or without optional IntegraBite™



E0 SRS Headrest Included with all Encompass Devices



Available for indexing the standalone device to specific couch top models. Call for details.



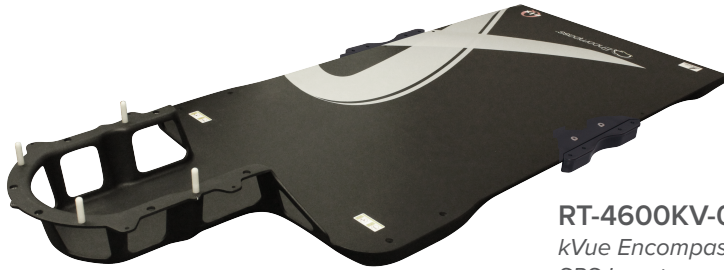
SPECIFICATIONS FOR STANDALONE DEVICES

Length	1358 mm
Weight Limit	249 kg (550 lb) Uniformly Distributed Load
Weight	5.5 kg (12 lbs)

Note: kVue™ Insert Length 1311 mm



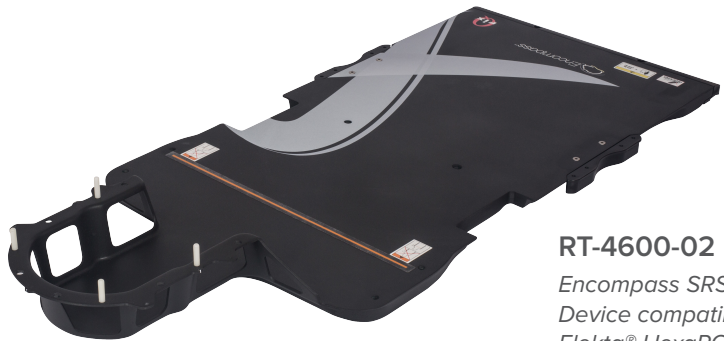
Encompass™



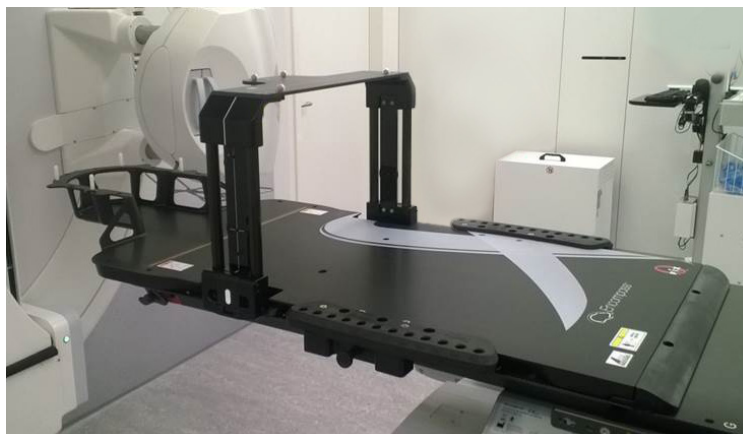
RT-4600KV-01
kVue Encompass
SRS Insert



RT-4600-01-MRI
Encompass SRS MR
Standalone Device



RT-4600-02
Encompass SRS Standalone
Device compatible with
Elekta® HexaPOD™

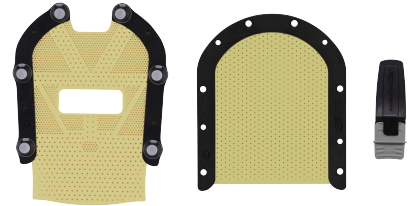


Encompass SRS Standalone Device (For Elekta® HexaPOD™)

THERMOPLASTIC OPTIONS

OPTION 1

Validated for HyperArc



RT-B889KYCF2
Encompass SRS Fibreplast® System
with Optional IntegraBite

SRS HEADREST



RT-4600-10
E0 SRS Headrest
(Included with All
Encompass Devices)
Validated for HyperArc



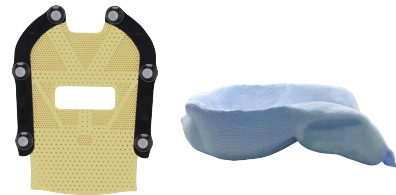
RT-4600-12
E2 SRS Headrest
Safe to use with HyperArc



RT-4600-14
E4 SRS Headrest
Safe to use with HyperArc

OPTION 2

Safe to use with HyperArc



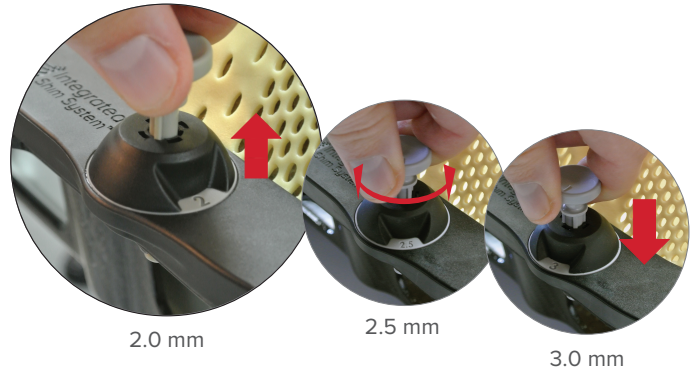
RT-B889KYCF2A
Encompass SRS Anterior Only
Fibreplast Mask to be used with
SRS Cushion Support
(Includes MOLDCARE U Head
Cushion, 20 cm x 35 cm)



RT-4600-20
SRS Cushion Support



Integrated Shim™ System



Integrated Shim System

Innovative Integrated Shim allows independent height adjustment at each pin, providing completely customizable immobilization. Each Integrated Shim can be adjusted in discrete 0.5 mm increments, with a total range of 4 mm.


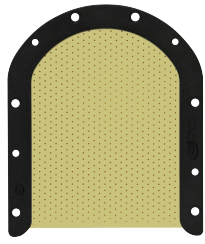
- Adjusting shim height is as easy as simply rotating the pin
- Eliminates the need for mask removal to adjust shim height
- Better workflow and instant setup feedback

Encompass SRS Fibreplast Masks

Made from the most rigid thermoplastic material available, providing anterior and posterior cranial support.

- Fibreplast is 50% more rigid than standard thermoplastics
- Variable Perf™ Pattern maximizes rigidity while minimizing the bolus effect


ENCOMPASS SRS FIBREPLAST SYSTEM

*Fibreplast Variable Perf
Open View Mask*

*Posterior
Thermoplastic*

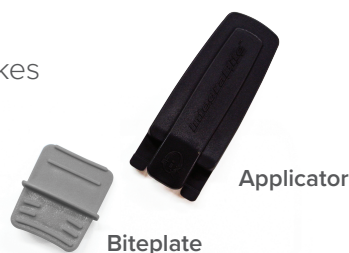
RT-B889KYCF2
*Encompass SRS Fibreplast System includes:
 Fibreplast Variable Perf Open View Mask
 Posterior Thermoplastic
 Optional IntegraBite*



visionrt | COMPATIBLE

IntegraBite™

- Decreased head and neck rotation, flexion, and extension
- Repeatable positioning
- Simple, streamlined design makes application and insertion easy



SRS Adapter for Portrait™ & S-Type Devices

Flexibility to Perform SRS Treatments with Portrait & S-Type Devices

Non-invasive solution that enables submillimetric positioning for stereotactic radiosurgery treatments on the Portrait Intracranial Head & Neck Devices and other S-type devices. The system reduces motion, allowing for maximum dose to the tumor while minimizing radiation delivered to the surrounding healthy tissue.

Clinical Advantages:

- Enables treatment of SRS and multiple lesions with a single isocenter when combined with Encompass SRS Fibreplast Masks
- Accommodates a variety of SRS headrests and cushion supports for a fully customizable setup
- Easy to set up and can help to minimize procedure time and cost.



SRS Adapter shown on Portrait with Cushion Support and MOLDCARE



*RT-4600-03
SRS Adapter (includes headrests)
*Not validated for HyperArc



*RT-4600-03-MRI
MR SRS Adapter (includes headrests)
*Not validated for HyperArc



RT-4552
Portrait Intracranial, Head & Neck Device easily converts to perform SRS treatments with the SRS Adapter.

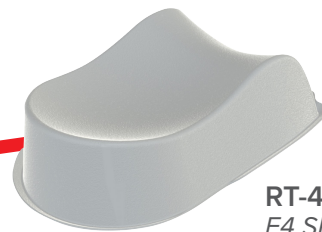
THERMOPLASTIC OPTIONS FOR SRS ADAPTER

OPTION 1	OPTION 2
 <p>RT-B889KYCF2 Encompass SRS Fibreplast System with Optional IntegraBite</p>	 <p>RT-B889KYCF2A Anterior Only Fibreplast Mask to be used with SRS Cushion Support (Includes MOLDCARE U Head Cushion, 20 cm x 35 cm.)</p>
SRS HEADRESTS	
 <p>RT-4600-20 SRS Cushion Support</p> <p>E0, E2, E4 SRS Headrests (included with SRS Adapter)</p>	



SRS Headrests

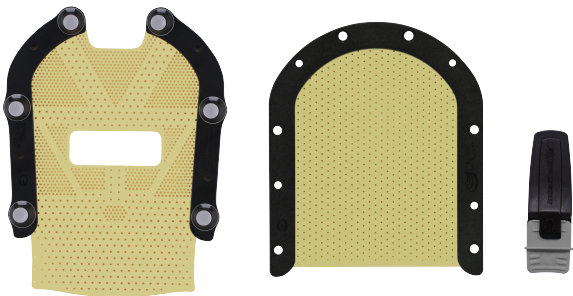

Available in different heights for positioning patients in a comfortable, neutral head and neck position. They support the patient's head while forming the Encompass SRS Fibreplast Mask for simulation.



RT-4600-14
E4 SRS Headrest

E4 SRS Headrest being used with Encompass SRS Fibreplast Mask

THERMOPLASTIC OPTIONS FOR SRS HEADRESTS

THERMOPLASTIC	SRS HEADREST OPTIONS
 <p>RT-B889KYCF2 <i>Encompass SRS Fibreplast System with Optional IntegraBite</i></p>	 <p>RT-4600-10 <i>E0 SRS Headrest (Included with SRS Adapter)</i></p> <p>RT-4600-12 <i>E2 SRS Headrest (Included with SRS Adapter)</i></p> <p>RT-4600-14 <i>E4 SRS Headrest (Included with SRS Adapter)</i></p>

SRS Cushion Support

Compatible with MOLDCARE® and an anterior Encompass SRS Fibreplast Mask.



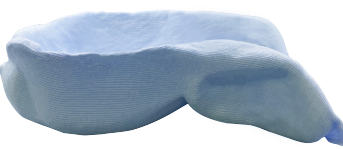
SRS Cushion Support being used with MOLDCARE and anterior Encompass SRS Fibreplast Mask.

Note: The SRS Cushion Support is shown here in grey so you can see how it fits into the SRS Adapter. The actual product is black.



SRS Cushion Support shown with MOLDCARE U Head Cushion (included with mask)

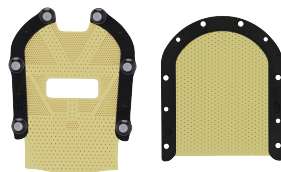
THERMOPLASTIC OPTIONS FOR SRS CUSHION SUPPORT

THERMOPLASTIC	SRS CUSHION SUPPORT OPTION
  <p>RT-B889KYCF2A Encompass SRS Anterior Only Fibreplast Mask to be used with SRS Cushion Support (Includes MOLDCARE U Head Cushion, 20 cm x 35 cm)</p>	 <p>RT-4600-20 SRS Cushion Support (Not Included with Encompass or SRS Adapter)</p>

Submillimetric Immobilization

*We have been using the Varian Hyperarc treatment technique in multiple brain metastasis radiosurgery applications for about 3 years. While applying this technique, we fix the patients with the Encompass system. Encompass is a **non-invasive** positioning and fixation system that is **very easy to apply** and **increases accuracy** of stereotactic treatments with **submillimeter accuracy**. With the open-faced thermoplastic system, the **patients' fear of being closed in is eliminated**, and **submillimetric movement within the fraction** is followed in 6D using Vision RT™ surface tracking system.*

– Nadir Küçük
Medical Physicist
Anadolu Medical Center



*We've been using Encompass masks for around 2 years as part of our HyperArc stereotactic service and are **very happy** with both the **quality of the mask** and the **service** we have received. The open faced nature of the mask provides a **better experience** for our patients while the **added rigidity** compared to our regular product means we can use them with **confidence** when delivering **high accuracy stereotactic treatments**.*

– Robert Brass
Principal Clinical Scientist
The Clatterbrodge Cancer Centre

2005477_EN_L

This brochure contains information about products which may or may not be available in particular countries. Each country has specific laws and regulations governing the commercialization of medical devices and the communication of information regarding medical devices in printed and digital media. Products appearing in this brochure or on our website may or may not have received approval, clearance, or marketing authorization by a governmental regulatory body in any particular country, or may have received approval, clearance, or marketing authorization for different indications and restrictions in different countries, or may be for investigational use only. A product's appearance in this brochure should not be construed as a solicitation or promotion for said product, nor any indication which is not authorized by the laws and regulations of the country where the reader resides. Fibreplast is a registered trademark of Qfix. Direct Indexing, Encompass, IntegraBite, Integrated Shim, Open View, Portrait, and Variable Perf are trademarks of Qfix. HyperArc is a trademark of Varian Medical Systems. Elekta and HexaPOD are trademarks of Elekta AB. Vision RT is a trademark of Vision RT LTD. MOLDCARE is a trademark of ALCARE CO, LTD. Encompass, IntegraBite, kVue, SRS Adapter, and SRS Cushion Support products or their accessories and components are patented or patent(s) pending in the US and/or elsewhere by Qfix or licensed by Qfix. This list may not be all inclusive.



Qfix
440 Church Road
Avondale, PA 19311
www.Qfix.com
+1 800.526.5247
sales@Qfix.com